

5) W-N3 630~1600A

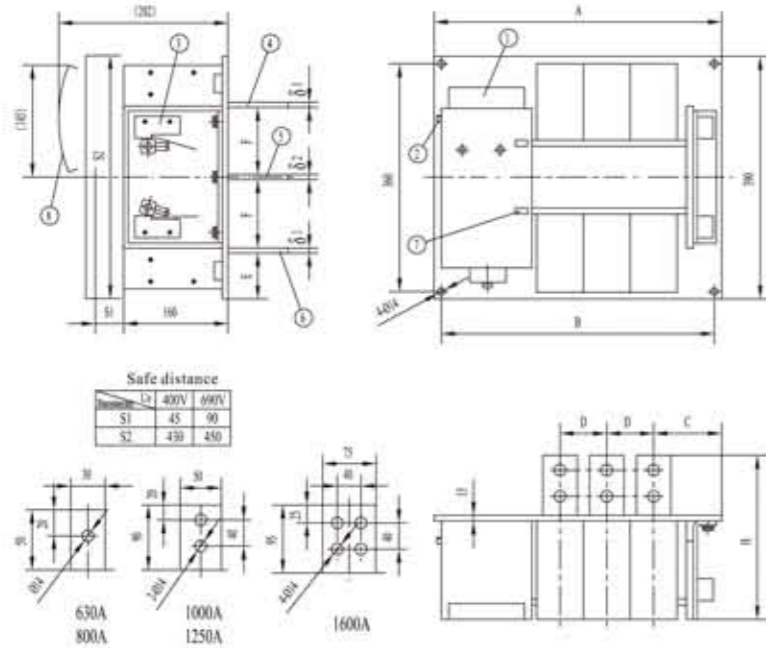


Table 9

Specification	630A 800A	1000A 1250A	1600A	
A	2P	340	370	410
	3P	405	450	510
	4P	470	530	610
B	2P	310	340	380
	3P	375	420	480
	4P	440	500	580
C	80	88	97.5	
D	65	80	100	
E	60	60	57	
F	117.5			
delta 1	10/15	12/15	15	
delta 2	15			
H	210	250	255	

Note: Refer to Table 9 for the dimensions of A-F, H, delta 1 and delta 2 in the above figure.

6) W-N3 1600~3150A (3P)

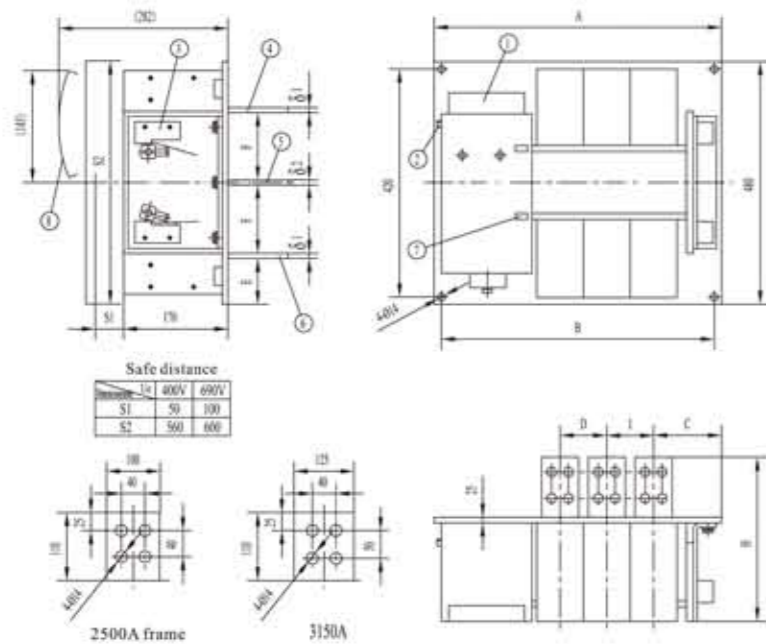
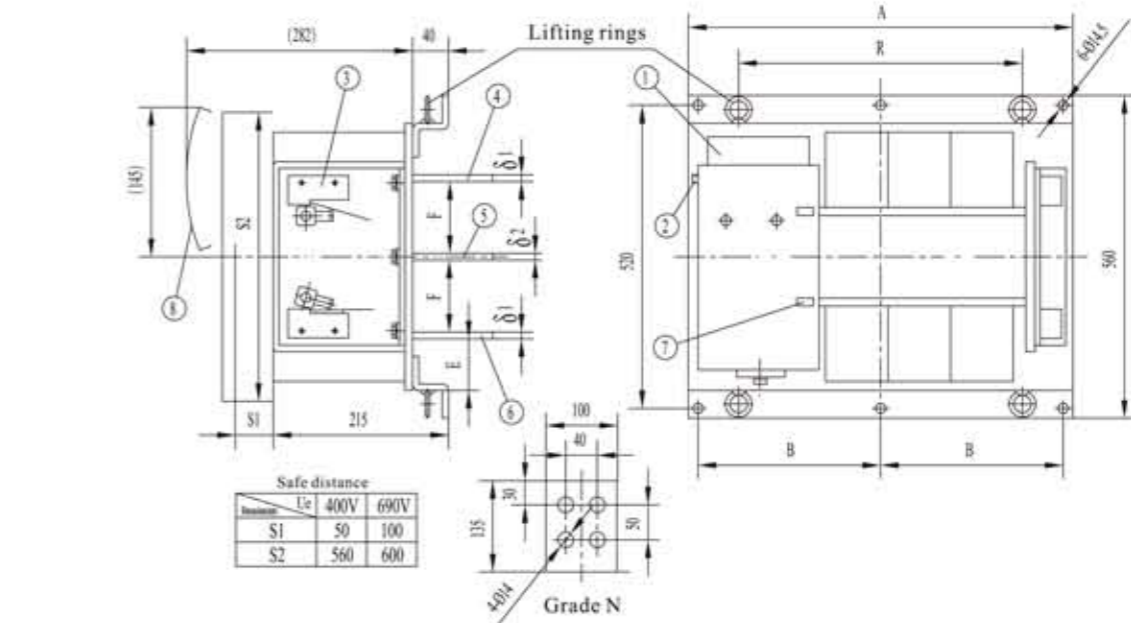


Table 10

Specification	1600A 2000A	2500A	3150A (3P)	
A	3P	680	680	915
	4P	845	850	
B	3P	595	595	860
	4P	790	790	
C	130	130	135	
D	145	145	220	
E	75	75	75	
F	116.5	114	114	
delta 1	15	20		
delta 2	15	20		
H	305	305	335	
I	160	160	220	

Note: Refer to Table 10 for the dimensions of A-F, H, I, delta 1 and delta 2 in the above figure.

7) W-N3 3150A (4P)~5000A



Note: The automatic transfer switches 3150A (4P), 4000A and 5000A have four lifting rings. Before lifting, confirm that the rings are screwed into the mounting rail of the switch and the bearing capacity of the rope is not less than 500kg. Perform a trial lifting to confirm the center of gravity of the switch to prevent rollover or slipping.

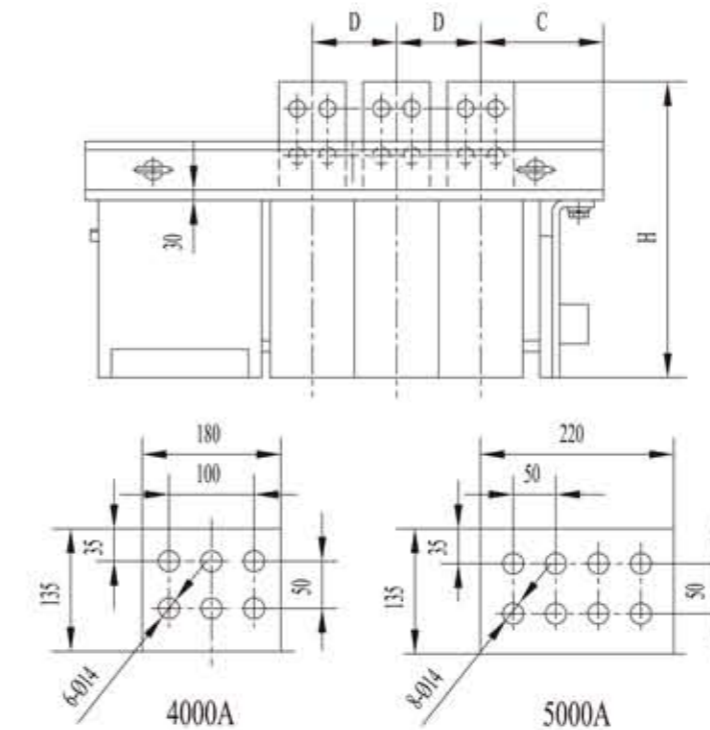


Table 11

Specification	3150A	4000A	5000A
A	3P	915	1080
	4P	1017	1160
B	3P	430×2	500×2
	4P	478×2	470×2
C	135	135	230
D	240	230	270
E	75	75	88
F	114		
delta 1	20		
delta 2	20		
R	800	900	
H	335	350	350

Note: Refer to Table 11 for the dimensions of A-F, delta 1, delta 2, R, and H in the above figure.