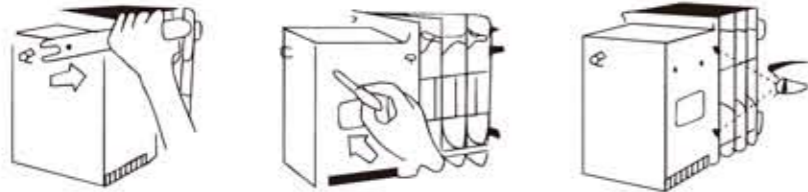


V. Manual operation methods and notices

The connection and disconnection capacity of the W series switches is ensured under electric operation, but when they are operated manually the capacity is uncertain because the speed with which connection and disconnection is made will vary. Loaded connection and disconnection in manual mode will result in excessive damage to the silver alloy contacts. Therefore, manual operation should only be done during inspection and maintenance of the operating mechanism and contacts, or in the case of an electrical fault.

Note: Cut off all the power before manual operation. Make sure the operating handle is removed from the transfer switch after use.

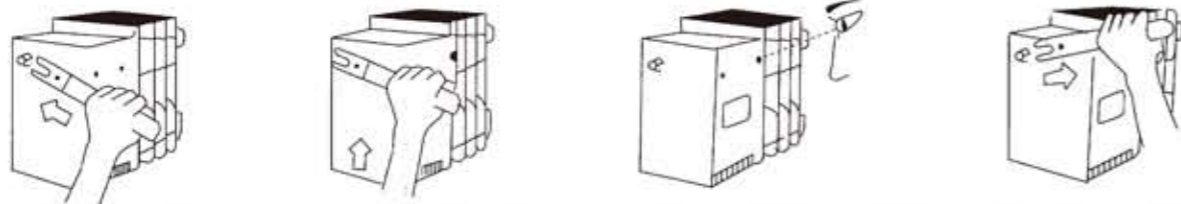
1) Manual tripping is available for W-N3 switches only. The W-2 switches do not have this facility.



After removing the operating handle, insert a screwdriver into the TRIP hole on the left side and push it inwards to trip the switch. Check this in the ON/OFF indicator window.

2) Input method on the A power side

Note: For W-N3 switches, perform this step after finishing step 1); for W-2 switches, perform this step before completing step 1).



Fit the operating handle on the square shaft on the left hand side of the switch.

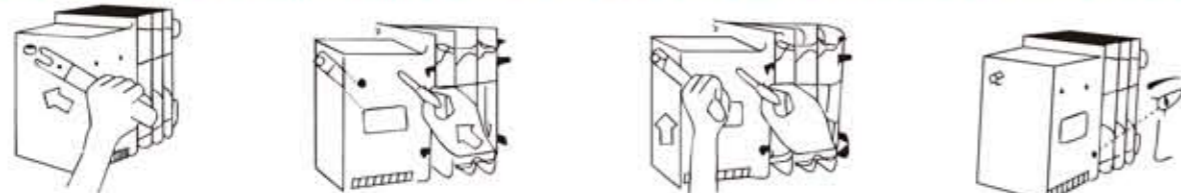
For a W-N3 switch: lift the handle upwards to connect input. For a W-2 switch: turn the handle downwards until you hear two clicks that indicate input.

Check the ON/OFF indicator window to ensure input.

Remove the operating handle after use.

3) Input method on the B power side

Note: For W-N3 switches, perform this step after finishing step 1); for W-2 switches, perform this step before completing step 1).



on the square shaft on the left hand side of the switch.

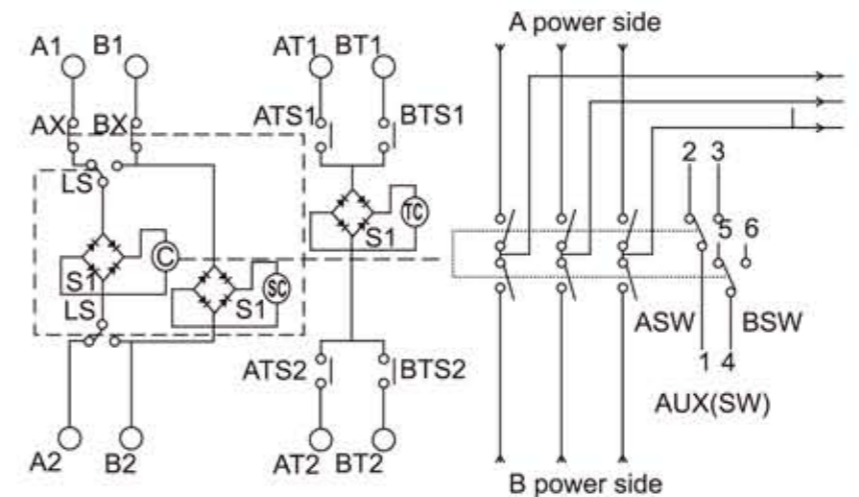
For a W-N3 switch: insert a screw driver into the SELECT hole on the right side and push it inwards. For a W-2 switch: turn the handle downwards until you hear two clicks.

For a W-N3 switch: keep pushing the screw driver and at the same time lift the handle upwards to connect input on the B side.

Check the ON/OFF indicator window to ensure input. Remove the operating handle after use.

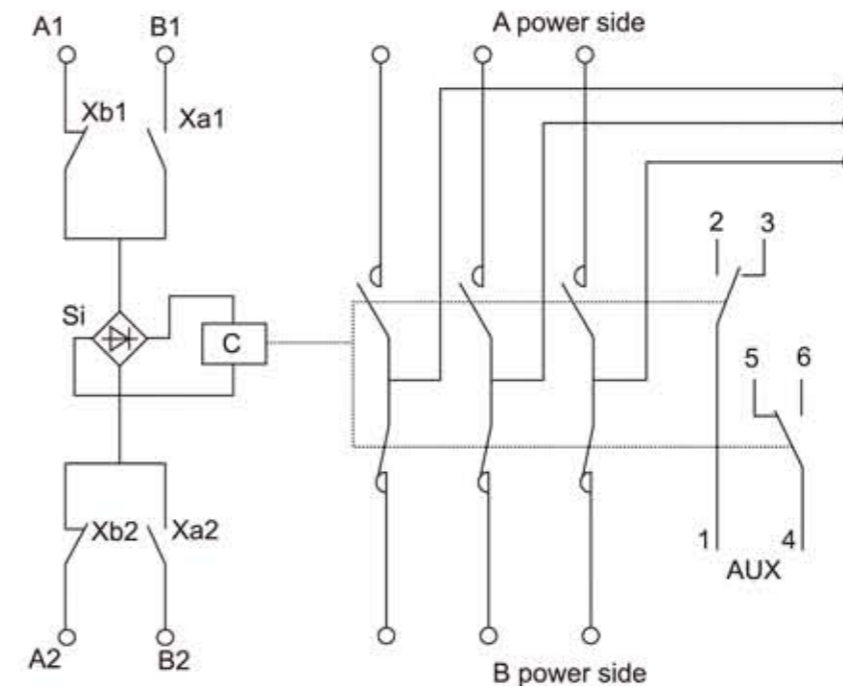
VI. Switch's internal wiring diagrams

1) W-N3 Internal wiring diagram
Two power sources are OFF.



C= Input coil
SC= Selection coil
TC= Tripping coil
S1= Rectifier
LS= Selection switch
ATS1, ATS2=A power OFF terminal
BTS1, BTS2=B power OFF terminal
AX, BX=Control switch
AUX=Auxiliary switch
A1-A2= Input terminal on A power side
B1-B2= Input terminal on B power side
AT1-AT2=Tripping terminal on A power side
BT1-BT2=Tripping terminal on B power side

2) W-2 (two-stage) internal wiring diagram



Xb1, Xb2: Internal control switch
Xa1, Xa2: Internal control switch
C: Input coil
Si: Rectifier
AUX: Auxiliary switch
A1-A2: Input terminal on A power side
B1-B2: Input terminal on B power side