



Item No: CP-180

Max output pressure: 700kg/ cm²
 Oil capacity: 350cc
 Length: approx.360mm
 Weight: approx.5.20kg
 Package: steel case
 Weight of case: approx.4.45kg



Item No: CP-180B

Max output pressure: 700kg/ cm²
 Oil capacity: 350cc
 Length: approx.340mm
 Weight: approx.4.00kg
 Package: steel case
 Weight of Box: approx.4.15kg



Item No: CP-390

Max output pressure: 700 kg/ cm²
 Oil capacity: 350cc
 Length: approx.480mm
 Weight: approx.4.90kg
 Package: steel case
 Weight of Box: approx.4kg



Item No: CP-630

Max output pressure: 700 kg/ cm²
 Oil capacity: 1100cc
 Length: approx.730mm
 Weight: approx.10.20kg
 Package: steel case
 Weight of case: approx.6.75kg



Item No: CP-700

Max output pressure: 700 kg/ cm²
 Oil capacity : 900cc
 Length: 700mm
 Weight: 10.70kg
 Package: steel case
 Weight of case: 6.75kg

CHARACTERISTIC:

Operation output pressure 700Kg/cm².
 Use 2M high pressure oil tube,with fast connection point.
 USE R32R super circulation oil or SHLL T-15.
 PT3/8" screw thread.
 Oil must be changed every half year.



ELECTRIC PUMP



Item No: ZCB6-5
3-phase motor or 2 phase motor

CHARACTERISTIC:

Operation output pressure 700Kg/cm².
Use 2M high pressure oil tube, with fast connection point.
USE R32R super circulation oil or SHLL T-15.
PT3/8" screw thread.
Oil must be changed every half year.



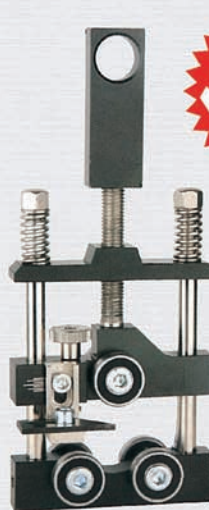
Item No: CFP-800

Item.No.	rated output	motor voltage	rated pressure		Capacity		Height	Weight
			high pressure	Low pressure	high pressure	Low pressure		
ZCB6-5	0.75kw	220V/: 380V	63mpa	2.5Mpa	0.8l/min	5l/min	Approx.470mm	Approx.30.00kg

Item.No	Max output pressure	Deposit volume of oil	Weight	Length	Weight of case
CFP-800	700kg/ cm ²	400cc	Approx.10.80kg	Approx.520mm	Approx.5.75kg



Item No: SK-30

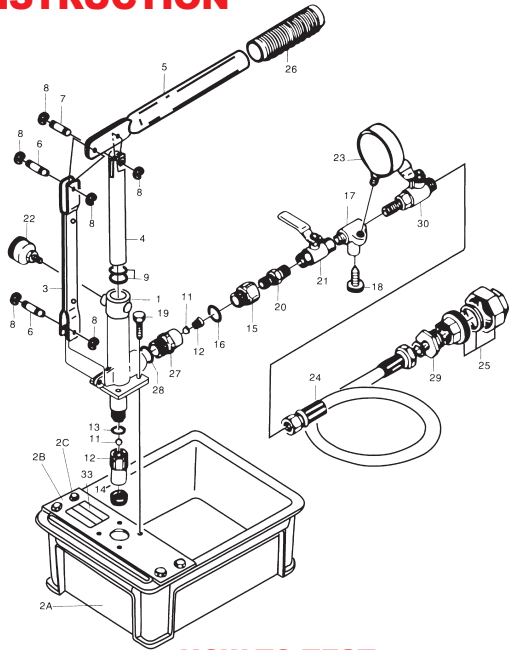


Item No: SK-40



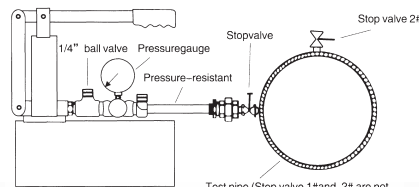
Item.No	Stripping range	Weight	Length	Note
SK-30	Φ 15- Φ 30mm	0.87kg	325mm	For stripping the end and the middle of conducting wire and cable
SK-40	Φ 20- Φ 40mm	0.80kg	250mm	For stripping the end of cable insulation and semiconductor

CONSTRUCTION



Number	DESCRIPTION	Qty.
1	CYLINDER	1
2A	WATERTANK	1
2B	STAND	4
2C	BOLT M6 × 15	1
3	SUPPORT	1
4	PLUNGER	1
5	HANDLE	2
6	SUPPORT PIN	1
7	CENTER PIN	6
8	SNADRING φ6	2
9	PLUNGER O-RING P-22	1
10	SUCTION CASE	1
11	SUCTION&DELIVERY VALVE	1
12	SPRING	1
13	SUCTION CADE-RING P-14	1
14	STRAINER	1
15	VALVE JOINT	1
16	DELIVERY-RING P-15	1
17	AIR GAUGESTAND	1
18	SPINDLE	1
19	BOLT	1
20	NIPPLE	1
21	1/4" BALL VALVE	1
22	GREASE CAP	4
23	PRESSURE GUANGE	1
24	PRESSURE HOSE	1
25	UNION JOINT	1
26	GRIP	1
27	SUCTION VALVE	1
28	O-RING P-18	1
29	BUSHING	1
30	BALL VALVE	1
31	NAME PLATE	1

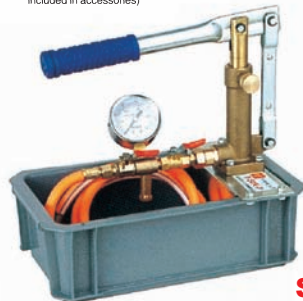
HOW TO TEST



Test pipe (Stop valve 1#and 2# are not included in accessories)



T-50-P



SB



SYB

Item No .	Pressure	Rate of water suction per stroke	Capacity	Weight	Dimension
SYB-25	25K/cm ²	10ml	4.5L	2.5kg	320x200x250
SYB-40	40K/cm ²	10ml	4.5L	2.5kg	320x200x250
SYB-63	63K/cm ²	10ml	4.5L	3.5kg	320x200x250
SB-1.6	1.6K/cm ²	32ml	18L	7kg	380x160x430
SB-2.5	2.5K/cm ²	32ml	18L	7kg	380x160x430
SB-4.0	4.0K/cm ²	32ml	18L	7kg	380x160x430
T-50K-P	50K/cm ²	32ml	4.5L	3.1kg	320x200x300