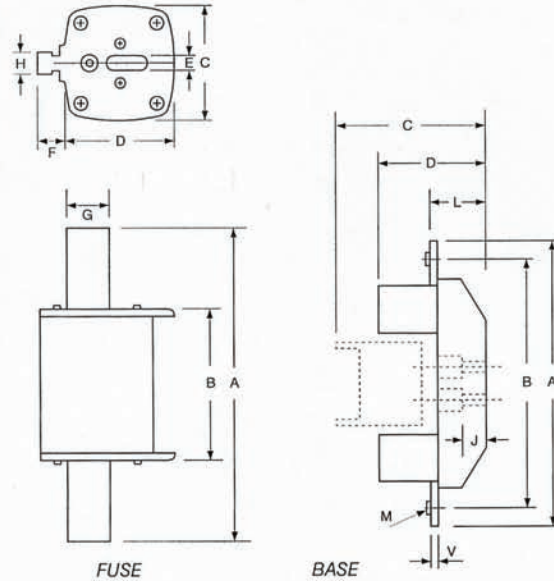
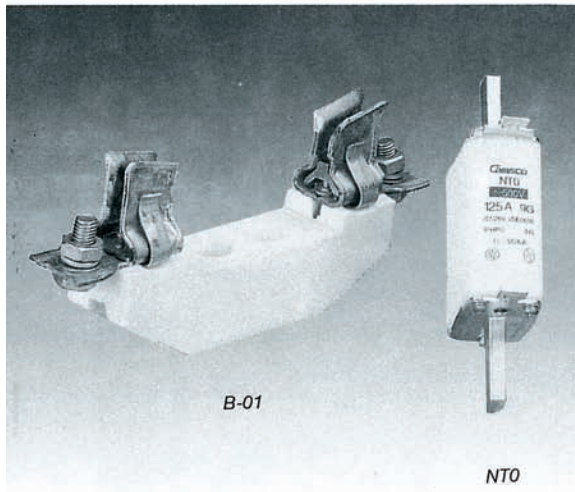




SQUARE PIPE TYPE FUSE & BASE



DIMENSION

ITEM NO. \ mm	A	B	C	D	E	F	G	H	L	M	V	J
NT 0	122	62	27.5	45.5	5.8	13	15	10	X	X	X	X
B - 01	175	155	100	75	X	X	X	X	40	8	2.5	18

SPECIFICATIONS

FUSE : ITEM NO. NT0
 RATED VOLTAGE : 500V
 RATED CURRENT : 6A, 10A, 16A, 20A,
 25A, 32A, 36A, 40A,
 50A, 63A, 80A, 100A,
 125A, 160A,
 CONNECTED WITH BASE : B-01

BASE : ITEM NO. B-01
 RATED VOLTAGE : 660V
 RATED CURRENT : 160A

FUSE BASE

- ITEM : RT 18-32
- RATED VOLTAGE : 500V
- RATED CURRENT : 32A
- CONNECTED WITH FUSE : RT 14-20 (φ10X38)
- MOUNTING METHODS : BY DIN RAIL (35mm)

