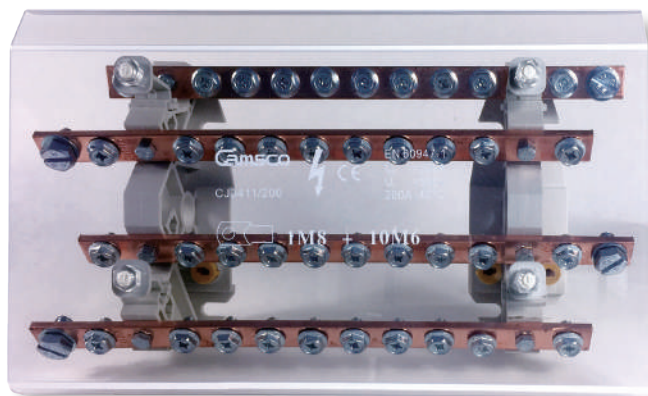


Material

- PA, Polyamide 66, 94V-2 grade. inflaming ratarding, good resist dissolve, good bounce impact force, Working Temperature: -30°C~110°C
- PC, Polycarbonate, good glossniess, inflaming retarding, bouce impact force and thermal stability is great, Working Temperature: -60°C~135°C
- Brass, screw is iron plated zinc
- Voltage: 250V / 380V
- Color: clear / trey color.

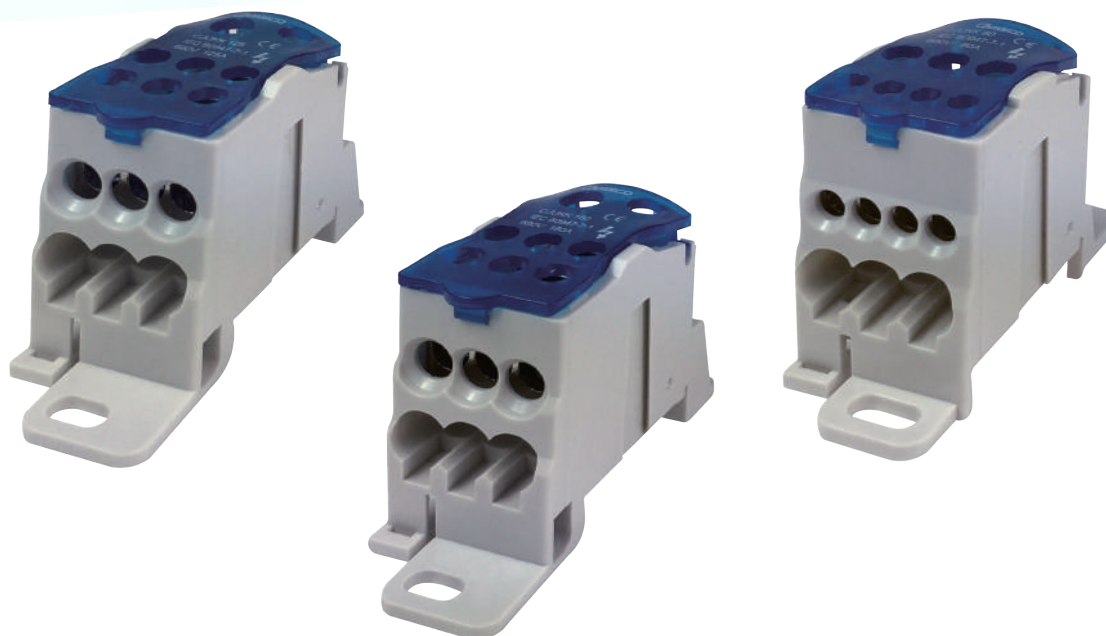
Item no.	Spec.	Cross Sectional (mm ²)	Rated Current (A)	Installation dimensions (mm)	Outline Dimensions (mm)
CJ1207	2P-7	6.5 X 12	125	45 X M4	65 X 45 X 51
CJ1211	2P-11	6.5 X 12	125	80 X M4	100 X 45 X 51
CJ1215	2P-15	6.5 X 12	125	112 X M4	132 X 45 X 51
CJ1407	4P-7	6.5 X 12	125	45 X M4	65 X 88 X 51
CJ1411	4P-11	6.5 X 12	125	80 X M4	100 X 88 X 51
CJ1415	4P-15	6.5 X 12	125	112 X M4	132 X 88 X 51



Material

- PA, Polyamide 66, 94V-2 grade. inflaming ratarding, good resist dissolve, good bounce impact force, Working Temperature: -30°C~110°C
- PC, Polycarbonate, good glossniess, inflaming retarding, bouce impact force and thermal stability is great, Working Temperature: -60°C~135°C
- Brass, screw is iron plated zinc
- Voltage: 250V / 380V
- Color: clear / trey color.

Item no.	Rated Current (A)	Rated Voltage (V)	Phase	Wires out 4P-13	Outline Dimensions (mm)
CJ34-160	160	660	4	8-ø7/4-ø9/1-ø12	39.5 X 29.5 X 42
CJ34-200	200	660	4	10M6+1M8	45 X 37 X 31
CJ34-250	250	660	4	10M6+1M8	45 X 37 X 31
CJ34-400	400	660	4	9M6+1M8	52 X 33.5 X 37



Material

- PA, Polyamide 66, 94V-2 grade. inflaming ratarding, good resist dissolve, good bounce impact force, Working Temperature: -30°C~110°C
- PC, Polycarbonate, good glossniess, inflaming retarding, bouce impact force and thermal stability is great, Working Temperature: -60°C~135°C
- Brass, screw is iron plated zinc
- Voltage: 250V / 380V
- Color: blue / trey color.

Item no.	Rated Current (A)	Wires In (mm ²)	Wires Out (mm ²)	Installation dimensions (mm)	Outline Dimensions (mm)
CJUKK-80	80	1 X16	4 X6+2 X 16	54 X M5	66 X 28 X 47
CJUKK-125	125	1 X 35+1 X 16	6 X 16	64 X M5	75 X 28 X 47
CJUKK-160	160	1 X 70+1 X 16	6 X 16	64 X M5	75 X 28 X 47
CJUKK-250	250	1 X 120	2 X 35+5 X 16+4 X 10	85 X 29 X M5	96 X 48 X 50
CJUKK-400	400	1 X 185	2 X 35+5 X 16+4 X 10	85 X 29 X M5	96 X 48 X 50
CJUKK-500	500	15...24 3...8	2 X 35+5 X 16+4 X 10	85 X 29 X M5	96 X 48 X 50



Agent